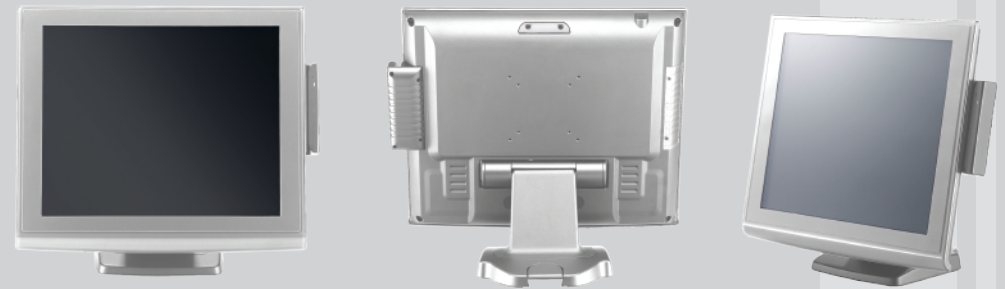


RM-1000

Combined with the sleek elegant design and robust aluminum die-cast housing, the RM-1000 is a state of the art POS monitor for all your POS needs. Whether operating in humid, hot or dusty areas, the RM-1000 can function competently under any environment circumstances. With a selection of 5 colors and various options to extend the functionality of unique POS monitors, the RM-1000 can cater for all your business needs.



Specifications

Model	RM-1015	RM-1017
LCD Display Size	15" TFT LCD	17" TFT LCD
Max. Resolution	1024 x 768 (XGA)	1280 x 1024 (SXGA)
Max. Color	16.2M	16.7M
LCD Brightness	250 / 350 cd/m ²	300 cd/m ²
Contrast Ratio	500 :1	800 :1
Touch Screen	5 / 4 wire Resistive	
On Screen Display (OSD)	Brightness, Contrast, Sharpness, Autotune, Phase, H/V Position	
I/O Connectivity		
Serial Port	1 x COM (D-Sub 9-pin) for Touchscreen	
PS/2	1 x Keyboard for Magnetic Stripe Card Reader	
Video Port	1 x VGA (D-Sub 15-pin)	
Power Supply	48W (12V/4A) External Power Adaptor	
Construction	Aluminum Die-casting Housing (rear casing), Plexi-Glass Acrylic (front bezel)	
Housing Color	Black / Silver	
Dimensions (W x H x D)	375 x 360 x 210 mm	405 x 415 x 220 mm
Weight	6.5 Kgs	8 Kgs
EMI/Safety	CE, FCC	
Operating Temperature	0°C ~ 35°C	
Optional Peripherals		
Magnetic Stripe Card Reader	Integrated triple/track MCR (PS/2 interface)	
Customer Pole Display	Integrated VFD Customer Pole Display	
Touch for USB	USB Type A for Touch Controller	



- The sleek elegant design and robust die-cast aluminum housing make the RM-1000 a state of the art POS monitor for all your POS needs
- With compact design, the RM-1000 can be operated under hot, humid or dusty areas under any environments
- Optional resistive touch screen, MCR and VFD customer display

